

**Powr-Flite®**

## WHOLE ROOM DRYING™!

Dry an entire room  
in just minutes!

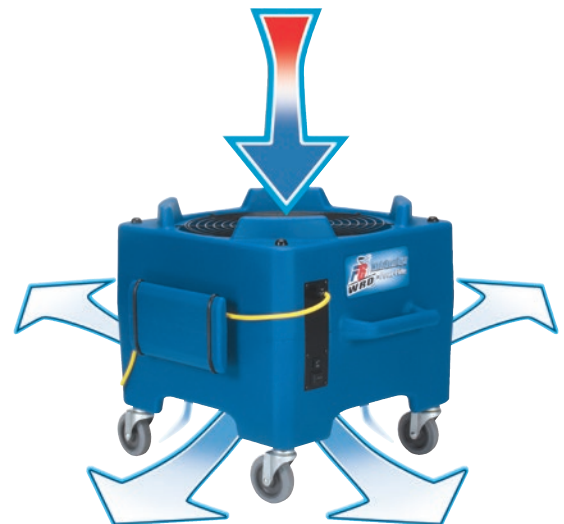


### F6 DOWNDRAFT® Dryer

Item# PDF6WRD

**The 6 blade precision-pitched fan pulls dry, warm air from above and pushes it down and across the entire surface of the floor.**

- 6-blade precision-pitched fan
- 2-speed motor rated for continuous use
- Variable angle operation for drying at 15, 30 or 90 degree angles for maximum drying flexibility
- Dry structures fast with more than 3500 CFM
- Stack up to 4 for easy storage or transporting
- 360° directed air flow
- 4 heavy-duty casters improve mobility and lift unit to optimum downdraft height



6-blade precision fan gives  
360° direct air flow.



**ENTIRE ROOM DRYING**

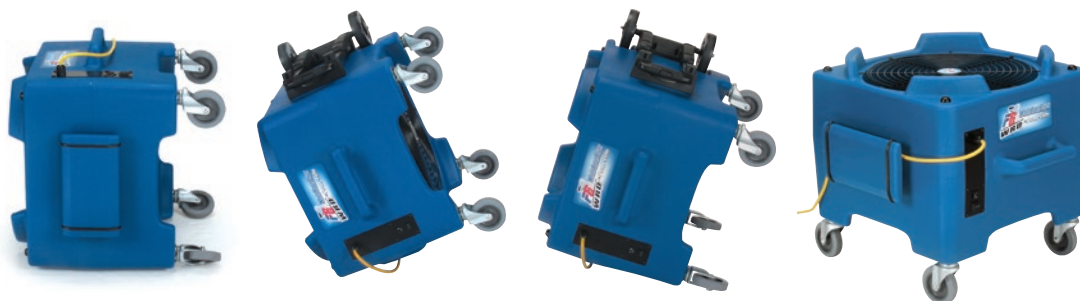
The F6 Downdraft® dryer produces 3500 CFM that will dry an entire room in as little as 15 minutes! The 6-blade precision pitched fan pulls dry, warm air from above and pushes it down and across the entire surface of the floor. The stackable design and telescoping handle provide easy transport and storage.



**3500 CFM**



Stackable design for easier storage



Multiple positions for every drying need.

PRODUCT SPECIFICATIONS										
MODEL	DESCRIPTION	MAX CFM	SPEEDS	CONSTRUCTION	VOLTAGE / POWER CORD	DRYING POSITIONS	SENSORS	WEIGHT (LBS.)	FAN BLADE	DIMENSIONS
PDF6WRD	F6 Downdraft® dryer, 1/4 hp, 3.3 amp	3500	2	roto-molded polyethylene	120V / 60Hz 20' - 16/3	4	circuit breaker	50	16.5"	27" x 17 1/2" x 24"